

Carey Rd between McKenzie Ave and Glanford Ave

February 25, 2020 To February 28, 2020



The data presented here is for information purposes only and should not be considered authoritative for construction, geotechnical, engineering, navigational, legal, or other site-specific uses. The information shared is owned by the Transportation Division of the Engineering Department at the District of Saanich. Accuracy is not guaranteed.

Start Date: 24-Feb-20
 Start Time: 0:01
 Station ID: C0011-04

Location 1: Carey Rd between McKenzie Ave and Glanford Ave

Note: No data available on Feb 25 from 21:15 to 22:30, likely due to vehicle parked on tube.

DATE:	February 24, 2020		February 25, 2020		February 26, 2020		February 27, 2020		February 28, 2020		WK AVG		WK AVG	HOURLY
	MON		TUE		WED		THURS		FRI				CH 1+2	%
Time:	NB	SB	NB	SB	NB	SB	NB	SB	NB	SB	NB	SB		
12-1 AM			22	9	10	6	15	4			16	6	22	0.5%
1-2 AM			5	4	9	6	7	3			7	4	11	0.3%
2-3 AM			4	3	7	1	6	3			6	2	8	0.2%
3-4 AM			3	3	1	3	1	6			2	4	6	0.1%
4-5 AM			7	6	5	6	12	6			8	6	14	0.3%
5-6 AM			9	20	10	19	18	21			12	20	32	0.8%
6-7 AM			36	69	33	78	37	82			35	76	112	2.7%
7-8 AM			87	211	84	190	76	185			82	195	278	6.7%
8-9 AM			148	221	139	238	130	203			139	221	360	8.7%
9-10 AM			89	103	88	123	76	117			84	114	199	4.8%
10-11 AM			102	109	83	85	100	94			95	96	191	4.6%
11-12 PM			96	95	120	96	119	78			112	90	201	4.9%
12-1 PM			131	95	115	101	102	110			116	102	218	5.3%
1-2 PM			111	80	146	87	122	104			126	90	217	5.3%
2-3 PM			155	107	172	120	177	103			168	110	278	6.7%
3-4 PM			230	134	258	136	233	115			240	128	369	8.9%
4-5 PM			324	119	336	119	330	157			330	132	462	11.2%
5-6 PM			261	108	244	123	273	119			259	117	376	9.1%
6-7 PM			142	98	143	101	178	83			154	94	248	6.0%
7-8 PM			126	83	135	65	129	75			130	74	204	5.0%
8-9 PM			80	42	82	40	106	53			89	45	134	3.3%
9-10 PM			23	11	87	37	77	37			62	28	91	2.2%
10-11 PM			14	5	59	22	42	28			38	18	57	1.4%
11-12 AM			22	9	32	13	31	11			28	11	39	1.0%
LANES			2227	1744	2398	1815	2397	1797			2341	1785	4126	100.0%
TOTAL			3971		4213		4194				4130			
	MON		TUE		WED		THURS		FRI		WK AVG			

PEAK HOUR					TOTAL VEHICALS-PEAK PERIODS		2 HOUR PEAK INTERVALS				
MAX. 7 - 9 am PEAK HOUR	360	⇒	8.7%	between 8-9 AM	1894	⇒	6 HR TOTAL	2 HR AM (7 - 9 AM)			
MAX. 7 - 11 am PEAK HOUR	360	⇒	8.7%	between 8-9 AM	1475	⇒	4 HR TOTAL	VEH / HR	VEH / 2HR	2 HR %	
								7-8 AM	278	637	15.4%
								8-9 AM	360		
MAX. 11 am - 1 pm PEAK HOUR	218	⇒	5.3%	between 12-1 PM	24 HOUR FACTORS						
MAX. 11 am - 3 pm PEAK HOUR	278	⇒	6.7%	between 2-3 PM							
MAX. 4 - 6 pm PEAK HOUR	462	⇒	11.2%	between 4-5 PM							
MAX. 3 - 6 pm PEAK HOUR	462	⇒	11.2%	between 4-5 PM	2.18	⇒	6-24 HR FACT.	2 HR NOON (11 - 1 PM)			
					2.80	⇒	4-24 HR FACT.	VEH / HR	VEH / 2HR	2 HR %	
								11-12 PM	201	419	10.2%
								12-1 PM	218		
								2 HR PM (4 - 6 PM)			
								VEH / HR	VEH / 2HR	2 HR %	
								4-5 PM	462	838	20.3%
								5-6 PM	376		

Carey Rd between McKenzie Ave and Glanford Ave

Northbound

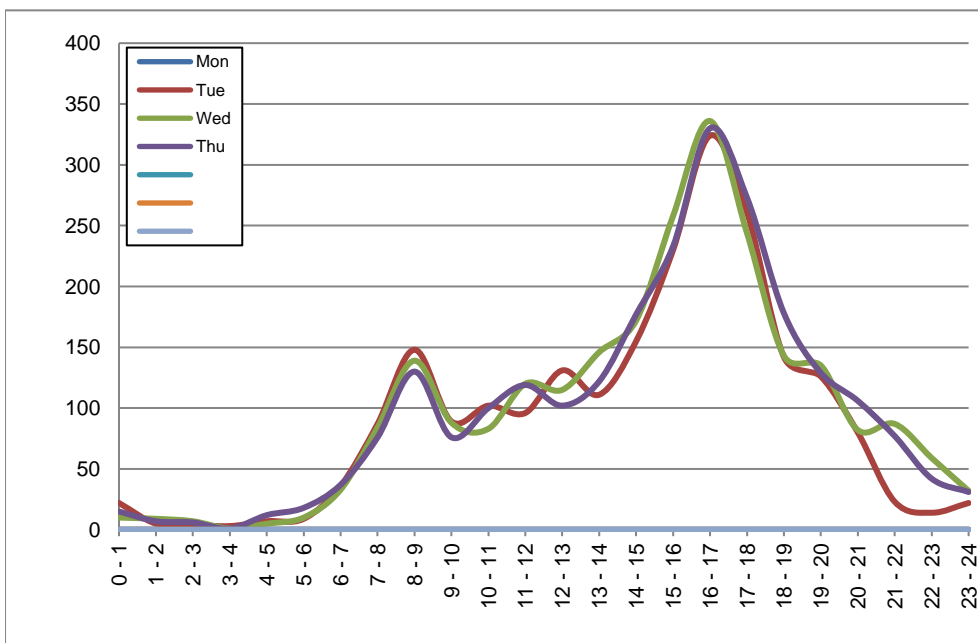
February 24, 2020 to February 27, 2020

Hourly Volumes

Time Period	Mon	Tue	Wed	Thu			
	Feb 24	Feb 25	Feb 26	Feb 27			
0 - 1		22	10	15			
1 - 2		5	9	7			
2 - 3		4	7	6			
3 - 4		3	1	1			
4 - 5		7	5	12			
5 - 6		9	10	18			
6 - 7		36	33	37			
7 - 8		87	84	76			
8 - 9		148	139	130			
9 - 10		89	88	76			
10 - 11		102	83	100			
11 - 12		96	120	119			
12 - 13		131	115	102			
13 - 14		111	146	122			
14 - 15		155	172	177			
15 - 16		230	258	233			
16 - 17		324	336	330			
17 - 18		261	244	273			
18 - 19		142	143	178			
19 - 20		126	135	129			
20 - 21		80	82	106			
21 - 22		23	87	77			
22 - 23		14	59	42			
23 - 24		22	32	31			
Day Total		2227	2398	2397			

15-Minute Volumes

Time Start	Mon	Tue	Wed	Thu				Time Start	Mon	Tue	Wed	Thu			
	Feb 24	Feb 25	Feb 26	Feb 27					Feb 24	Feb 25	Feb 26	Feb 27			
0:00		7	5	5				12:00		32	28	31			
0:15		6	1	8				12:15		35	24	23			
0:30		5	3	2				12:30		37	30	19			
0:45		4	1	0				12:45		27	33	29			
1:00		2	1	4				13:00		23	39	25			
1:15		1	4	0				13:15		33	30	34			
1:30		2	2	2				13:30		29	36	28			
1:45		0	2	1				13:45		26	41	35			
2:00		2	2	1				14:00		28	39	40			
2:15		1	2	3				14:15		37	48	42			
2:30		1	1	1				14:30		56	44	44			
2:45		0	2	1				14:45		34	41	51			
3:00		1	0	1				15:00		51	70	51			
3:15		1	1	0				15:15		58	66	53			
3:30		1	0	0				15:30		53	58	64			
3:45		0	0	0				15:45		68	64	65			
4:00		2	0	0				16:00		70	88	70			
4:15		1	0	3				16:15		70	94	81			
4:30		2	1	7				16:30		95	83	78			
4:45		2	4	2				16:45		89	71	101			
5:00		2	5	3				17:00		69	87	71			
5:15		0	1	9				17:15		62	64	77			
5:30		1	2	3				17:30		75	58	54			
5:45		6	2	3				17:45		55	35	71			
6:00		8	6	4				18:00		47	39	44			
6:15		7	4	9				18:15		23	35	43			
6:30		13	9	8				18:30		41	27	45			
6:45		8	14	16				18:45		31	42	46			
7:00		21	20	16				19:00		33	48	34			
7:15		25	17	18				19:15		42	32	37			
7:30		19	24	16				19:30		26	32	30			
7:45		22	23	26				19:45		25	23	28			
8:00		37	42	32				20:00		23	21	25			
8:15		48	43	39				20:15		17	19	32			
8:30		39	33	34				20:30		18	22	23			
8:45		24	21	25				20:45		22	20	26			
9:00		22	25	16				21:00		19	25	24			
9:15		18	23	13				21:15		4	25	14			
9:30		27	16	31				21:30		0	21	20			
9:45		22	24	16				21:45		0	16	19			
10:00		23	12	22				22:00		0	17	14			
10:15		33	25	33				22:15		0	18	8			
10:30		22	24	22				22:30		5	10	9			
10:45		24	22	23				22:45		9	14	11			
11:00		24	24	33				23:00		12	15	14			
11:15		33	27	24				23:15		4	7	6			
11:30		23	31	33				23:30		5	6	3			
11:45		16	38	29				23:45		1	4	8			



Site notes:

Carey Rd between McKenzie Ave and Glanford Ave

Southbound

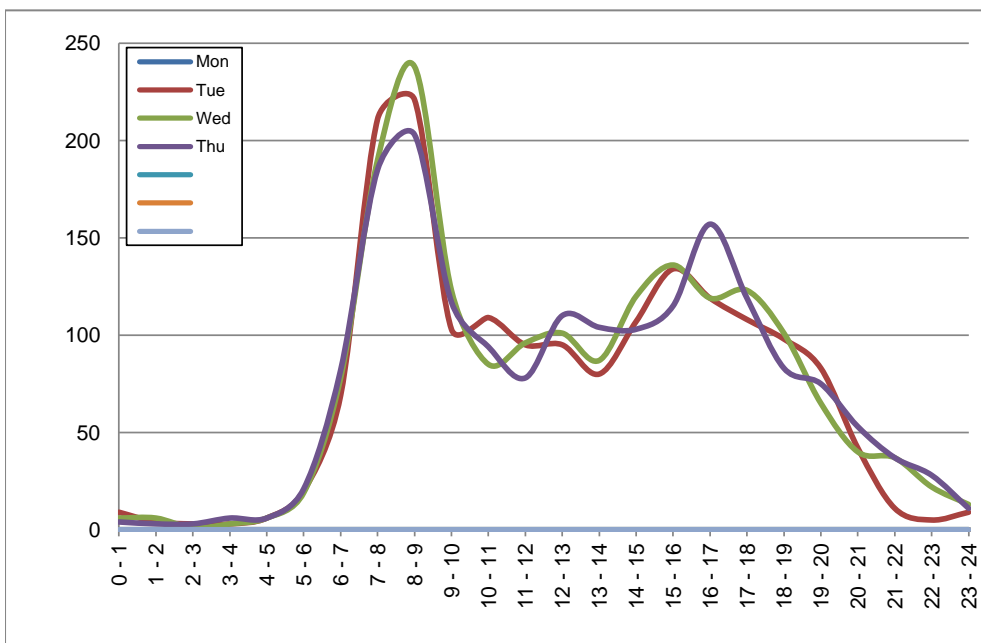
February 24, 2020 to February 27, 2020

Hourly Volumes

Time Period	Mon	Tue	Wed	Thu			
	Feb 24	Feb 25	Feb 26	Feb 27			
0 - 1		9	6	4			
1 - 2		4	6	3			
2 - 3		3	1	3			
3 - 4		3	3	6			
4 - 5		6	6	6			
5 - 6		20	19	21			
6 - 7		69	78	82			
7 - 8		211	190	185			
8 - 9		221	238	203			
9 - 10		103	123	117			
10 - 11		109	85	94			
11 - 12		95	96	78			
12 - 13		95	101	110			
13 - 14		80	87	104			
14 - 15		107	120	103			
15 - 16		134	136	115			
16 - 17		119	119	157			
17 - 18		108	123	119			
18 - 19		98	101	83			
19 - 20		83	65	75			
20 - 21		42	40	53			
21 - 22		11	37	37			
22 - 23		5	22	28			
23 - 24		9	13	11			
Day Total		1744	1815	1797			

15-Minute Volumes

Time Start	Mon	Tue	Wed	Thu				Time Start	Mon	Tue	Wed	Thu			
	Feb 24	Feb 25	Feb 26	Feb 27					Feb 24	Feb 25	Feb 26	Feb 27			
0:00		3	1	2				12:00		24	28	30			
0:15		2	1	1				12:15		27	19	23			
0:30		2	2	0				12:30		20	26	28			
0:45		2	2	1				12:45		24	28	29			
1:00		1	0	1				13:00		23	21	24			
1:15		1	4	1				13:15		22	21	29			
1:30		2	1	1				13:30		18	18	29			
1:45		0	1	0				13:45		17	27	22			
2:00		1	0	1				14:00		20	24	18			
2:15		0	1	2				14:15		22	27	23			
2:30		0	0	0				14:30		24	27	17			
2:45		2	0	0				14:45		41	42	45			
3:00		0	0	1				15:00		31	32	28			
3:15		1	1	1				15:15		34	38	32			
3:30		0	1	1				15:30		29	34	27			
3:45		2	1	3				15:45		40	32	28			
4:00		1	0	0				16:00		35	28	36			
4:15		1	2	0				16:15		20	32	38			
4:30		1	1	3				16:30		38	31	47			
4:45		3	3	3				16:45		26	28	36			
5:00		3	2	4				17:00		31	36	39			
5:15		4	3	7				17:15		27	32	27			
5:30		4	7	5				17:30		27	33	29			
5:45		9	7	5				17:45		23	22	24			
6:00		8	8	7				18:00		21	28	25			
6:15		19	11	21				18:15		25	25	20			
6:30		17	22	25				18:30		33	19	23			
6:45		25	37	29				18:45		19	29	15			
7:00		37	39	25				19:00		22	23	23			
7:15		54	35	45				19:15		18	14	20			
7:30		53	50	65				19:30		24	18	14			
7:45		67	66	50				19:45		19	10	18			
8:00		51	53	54				20:00		10	12	6			
8:15		44	61	49				20:15		12	12	22			
8:30		65	66	53				20:30		11	6	17			
8:45		61	58	47				20:45		9	10	8			
9:00		30	29	36				21:00		8	9	10			
9:15		31	34	27				21:15		3	12	12			
9:30		22	25	25				21:30		0	11	9			
9:45		20	35	29				21:45		0	5	6			
10:00		20	17	24				22:00		0	7	7			
10:15		27	29	21				22:15		1	4	9			
10:30		32	17	31				22:30		2	3	7			
10:45		30	22	18				22:45		2	8	5			
11:00		21	28	21				23:00		2	5	2			
11:15		26	15	17				23:15		4	3	3			
11:30		25	28	15				23:30		3	2	1			
11:45		23	25	25				23:45		0	3	5			



Site notes:

Vehicle Speed Summary

Saanich Engineering Department

Count Id: C0011-04

Filename: Carey Rd between McKenzie Ave and Glanford Ave-Feb-2020.xlsm

Location: Carey Rd between McKenzie Ave and Glanford Ave

Note: No data available on Feb 25 from 21:15 to 22:30, likely due to vehicle parked

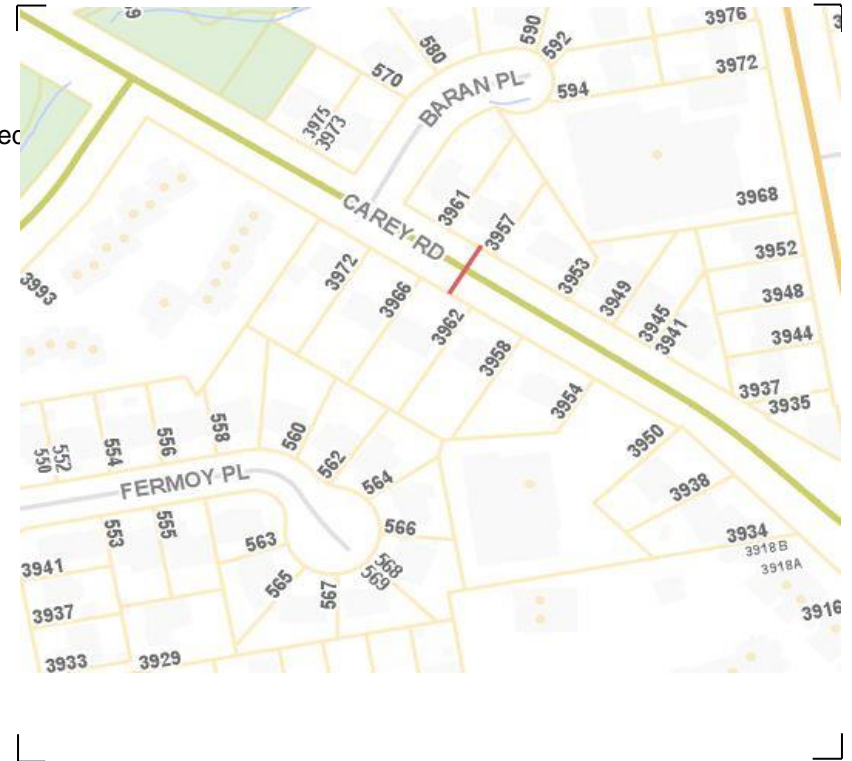
Direction: **North-South**

Dates: **February 25, 2020 To February 28, 2020**

Filtered data

AVG. SPEED	28 mph	45 km/h
50 % SPEED	28 mph	45 km/h
85 % SPEED	32 mph	51 km/h
95 % SPEED	34 mph	55 km/h

Location Map



Carey Rd between McKenzie Ave and Glanford Ave

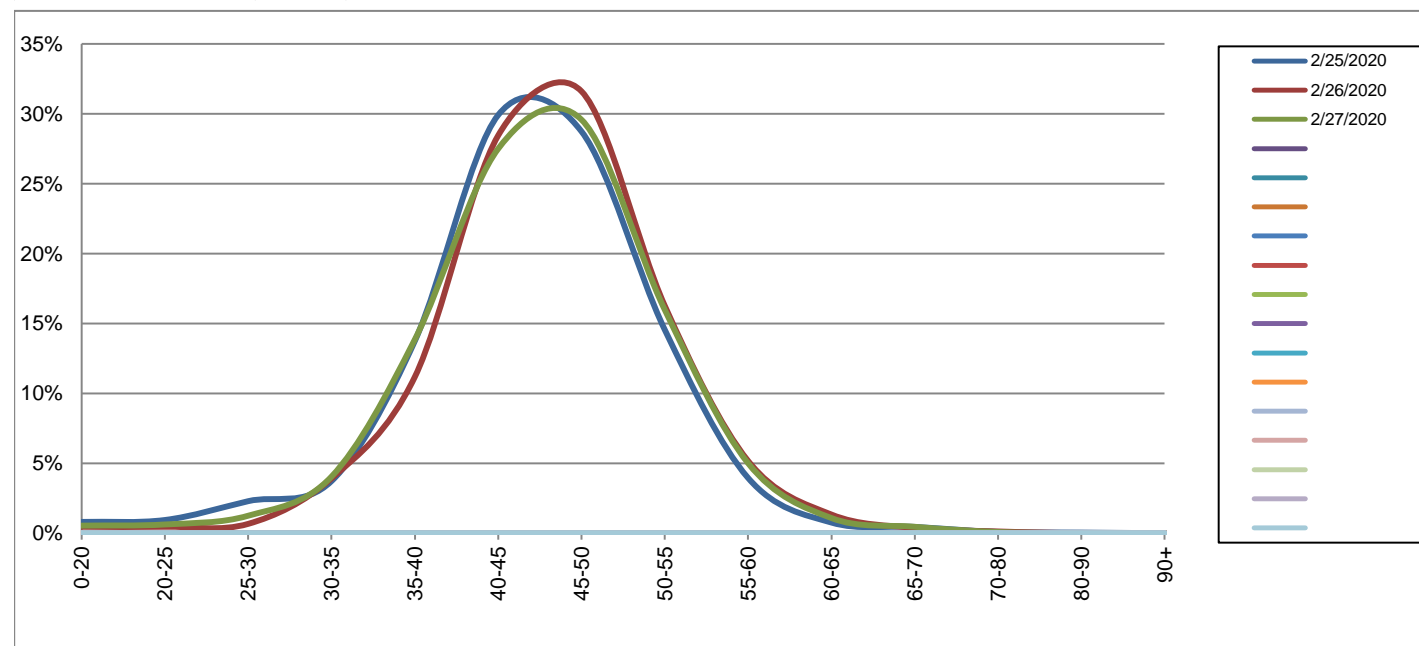
Northbound

February 25, 2020 to February 27, 2020

Daily Speed Bin Percentages															Daily Speed Bin Volumes														Total	Avg.
Bin #	1	2	3	4	5	6	7	8	9	10	11	12	13	14	1	2	3	4	5	6	7	8	9	10	11	12	13	14	Volume	Speed
Bin Speeds	0-20	20-25	25-30	30-35	35-40	40-45	45-50	50-55	55-60	60-65	65-70	70-80	80-90	90+	0-20	20-25	25-30	30-35	35-40	40-45	45-50	50-55	55-60	60-65	65-70	70-80	80-90	90+		
2/25/2020	0.8%	0.9%	2.3%	3.7%	13.7%	29.9%	28.7%	14.5%	4.0%	0.8%	0.4%	0.1%	0.0%	0.0%	18	21	51	83	306	666	640	324	88	17	10	2	1	0	2227	44
2/26/2020	0.5%	0.5%	0.7%	3.9%	11.2%	28.4%	31.6%	16.3%	5.2%	1.3%	0.4%	0.1%	0.0%	0.0%	11	11	16	94	268	682	758	390	124	32	9	3	0	0	2398	46
2/27/2020	0.5%	0.6%	1.3%	4.0%	13.9%	27.5%	29.6%	16.0%	5.0%	1.1%	0.5%	0.1%	0.0%	0.0%	13	15	30	97	332	659	709	383	120	26	11	2	0	0	2397	45
Total	0.6%	0.7%	1.4%	3.9%	12.9%	28.6%	30.0%	15.6%	4.7%	1.1%	0.4%	0.1%	0.0%	0.0%	42	47	97	274	906	2007	2107	1097	332	75	30	7	1	0	7022	45

Speed Data Summary

Bin #	1	2	3	4	5	6	7	8	9	10	11	12	13	14	Total
Bin Speeds	0-20	20-25	25-30	30-35	35-40	40-45	45-50	50-55	55-60	60-65	65-70	70-80	80-90	90+	
Survey Total	42	47	97	274	906	2007	2107	1097	332	75	30	7	1	0	7022
% Total	0.6%	0.7%	1.4%	3.9%	12.9%	28.6%	30.0%	15.6%	4.7%	1.1%	0.4%	0.1%	0.0%	0.0%	100%
Accumulated %	0.6%	1.3%	2.6%	6.6%	19.5%	48.0%	78.0%	93.7%	98.4%	99.5%	99.9%	100.0%	100.0%	100%	
Inverse Accum. %	99.4%	98.7%	97.4%	93.4%	80.5%	52.0%	22.0%	6.3%	1.6%	0.5%	0.1%	0.0%	0.0%	0.0%	
Average Speed	45 KM/H														



Site notes:

Carey Rd between McKenzie Ave and Glanford Ave

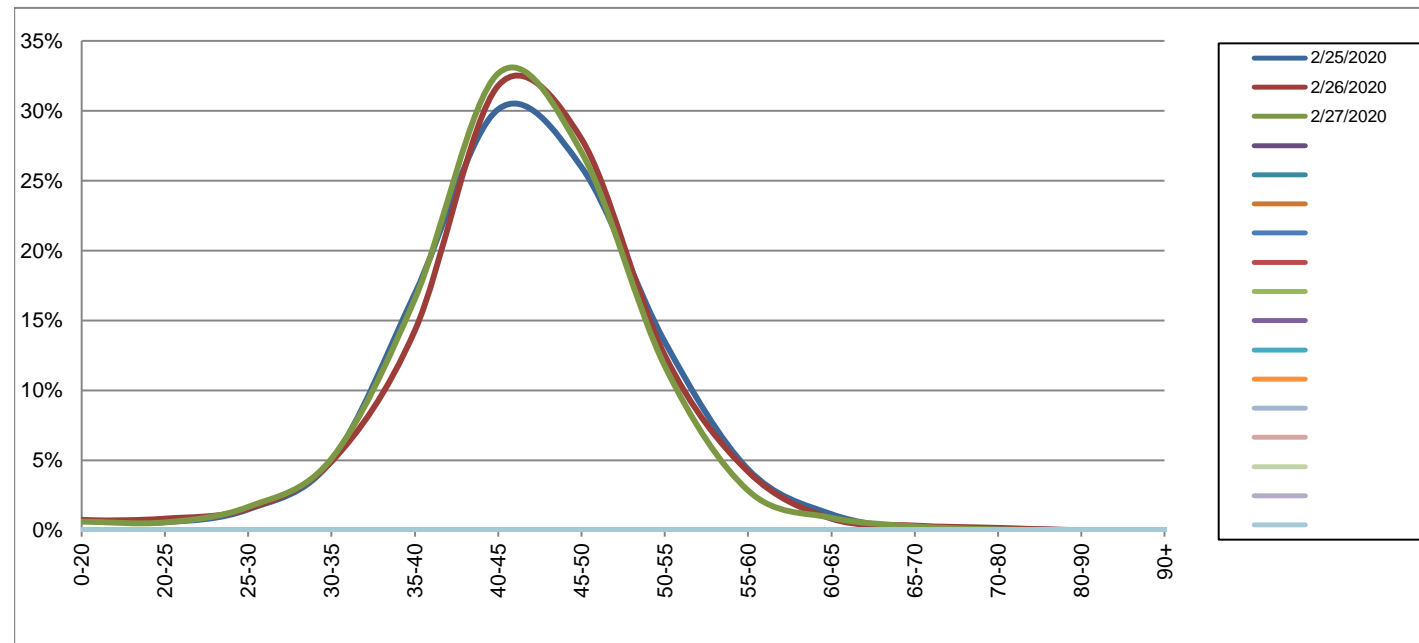
Southbound

February 25, 2020 to February 27, 2020

Daily Speed Bin Percentages															Daily Speed Bin Volumes														Total	Avg. Speed
Bin #	1	2	3	4	5	6	7	8	9	10	11	12	13	14	1	2	3	4	5	6	7	8	9	10	11	12	13	14		
Bin Speeds	0-20	20-25	25-30	30-35	35-40	40-45	45-50	50-55	55-60	60-65	65-70	70-80	80-90	90+	0-20	20-25	25-30	30-35	35-40	40-45	45-50	50-55	55-60	60-65	65-70	70-80	80-90	90+		
2/25/2020	0.7%	0.6%	1.5%	5.0%	16.9%	30.1%	26.0%	13.5%	4.4%	1.1%	0.1%	0.1%	0.0%	0.0%	13	10	26	87	295	525	453	235	76	20	2	2	0	0	1744	44
2/26/2020	0.7%	0.8%	1.5%	4.9%	14.3%	31.8%	28.0%	12.5%	4.2%	0.8%	0.3%	0.2%	0.0%	0.0%	12	15	28	89	259	577	508	227	76	15	6	3	0	0	1815	44
2/27/2020	0.6%	0.6%	1.7%	5.1%	16.5%	32.7%	27.0%	11.7%	2.8%	0.9%	0.3%	0.1%	0.0%	0.0%	11	10	30	92	297	587	486	211	51	16	5	1	0	0	1797	44
Total	0.7%	0.7%	1.6%	5.0%	15.9%	31.5%	27.0%	12.6%	3.8%	1.0%	0.2%	0.1%	0.0%	0.0%	36	35	84	268	851	1689	1447	673	203	51	13	6	0	0	5356	44

Speed Data Summary

Bin #	1	2	3	4	5	6	7	8	9	10	11	12	13	14	Total
Bin Speeds	0-20	20-25	25-30	30-35	35-40	40-45	45-50	50-55	55-60	60-65	65-70	70-80	80-90	90+	
Survey Total	36	35	84	268	851	1689	1447	673	203	51	13	6	0	0	5356
% Total	0.7%	0.7%	1.6%	5.0%	15.9%	31.5%	27.0%	12.6%	3.8%	1.0%	0.2%	0.1%	0.0%	0.0%	100%
Accumulated %	0.7%	1.3%	2.9%	7.9%	23.8%	55.3%	82.3%	94.9%	98.7%	99.6%	99.9%	100.0%	100.0%	100%	
Inverse Accum. %	99.3%	98.7%	97.1%	92.1%	76.2%	44.7%	17.7%	5.1%	1.3%	0.4%	0.1%	0.0%	0.0%	0.0%	
Average Speed	44 KM/H														



Site notes:

Carey Rd between McKenzie Ave and Glanford Ave

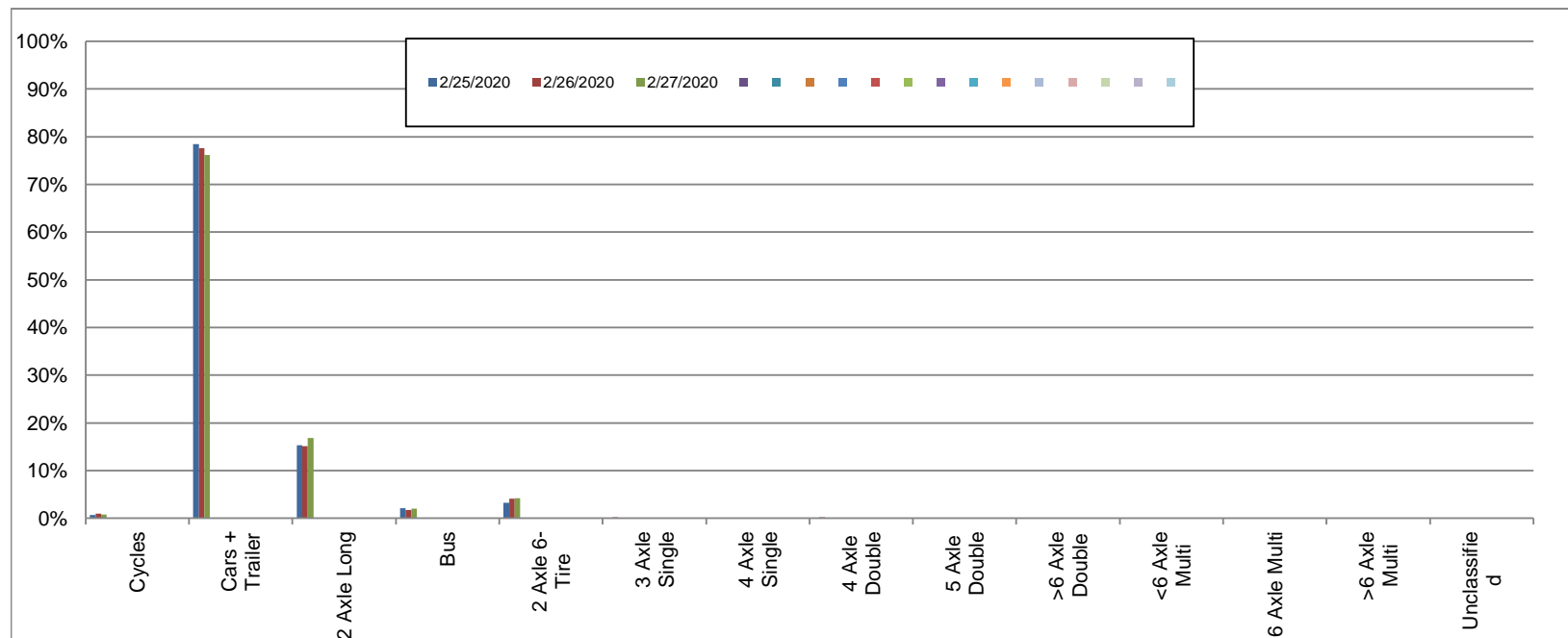
Northbound

February 25, 2020 to February 27, 2020

Daily Class Bin Percentages															Daily Class Bin Volumes											Total Volume				
Bin #	1	2	3	4	5	6	7	8	9	10	11	12	13	14	1	2	3	4	5	6	7	8	9	10	11		12	13	14	
Bin Class	Cycles	Cars + Trailer	2 Axle Long	Bus	2 Axle 6-Tire	3 Axle Single	4 Axle Single	4 Axle Double	5 Axle Double	>6 Axle Double	<6 Axle Multi	6 Axle Multi	>6 Axle Multi	Unclassified	Cycles	Cars + Trailer	2 Axle Long	Bus	2 Axle 6-Tire	3 Axle Single	4 Axle Single	4 Axle Double	5 Axle Double	>6 Axle Double	<6 Axle Multi	6 Axle Multi	>6 Axle Multi	Unclassified		
2/25/2020	0.7%	78.4%	15.3%	2.1%	3.3%	0.0%	0.0%	0.0%	0.0%	0.0%	0.0%	0.0%	0.0%	0.0%	16	1747	341	47	73	1	0	1	0	0	0	0	0	0	1	2227
2/26/2020	1.0%	77.6%	15.1%	1.8%	4.1%	0.3%	0.0%	0.2%	0.0%	0.0%	0.0%	0.0%	0.0%	0.0%	24	1860	363	42	98	6	0	4	1	0	0	0	0	0	0	2398
2/27/2020	0.8%	76.1%	16.8%	2.0%	4.2%	0.0%	0.0%	0.0%	0.0%	0.0%	0.0%	0.0%	0.0%	0.0%	18	1825	403	48	101	1	0	0	0	0	0	0	0	1	2397	
Total	0.8%	77.4%	15.8%	2.0%	3.9%	0.1%	0.0%	0.1%	0.0%	0.0%	0.0%	0.0%	0.0%	0.0%	58	5432	1107	137	272	8	0	5	1	0	0	0	0	2	7022	

Class Data Summary

Bin #	1	2	3	4	5	6	7	8	9	10	11	12	13	14	Total Volume
Bin Class	Cycles	Cars + Trailer	2 Axle Long	Bus	2 Axle 6-Tire	3 Axle Single	4 Axle Single	4 Axle Double	5 Axle Double	>6 Axle Double	<6 Axle Multi	6 Axle Multi	>6 Axle Multi	Unclassified	Total Volume
Survey Total	58	5432	1107	137	272	8	0	5	1	0	0	0	0	2	7022
% Total	0.8%	77.4%	15.8%	2.0%	3.9%	0.1%	0.0%	0.1%	0.0%	0.0%	0.0%	0.0%	0.0%	0.0%	100%
Accumulated %	0.8%	78.2%	93.9%	95.9%	99.8%	99.9%	99.9%	100.0%	100.0%	100.0%	100.0%	100.0%	100.0%	100.0%	
Inv. Accum. %	99.2%	21.8%	6.1%	4.1%	0.2%	0.1%	0.1%	0.0%	0.0%	0.0%	0.0%	0.0%	0.0%	0.0%	



Classification Descriptions

Bin #	Bin Description
1	Motorcycles
2	Passenger cars, including those with recreational trailers
3	2-axle pick-ups, vans, and RVs, including those with recreational trailers
4	Buses
5	2-axle, 6-tire single units
6	3-axle single units
7	4-axle single units
8	3-axle or 4-axle double unit
9	5-axle double unit
10	6-, 7-, or 8-axle double unit
11	5-axle multiple unit
12	6-axle multiple unit
13	7-or-more-axle multiple unit
14	Vehicles that could not be classified

Site notes:

Carey Rd between McKenzie Ave and Glanford Ave

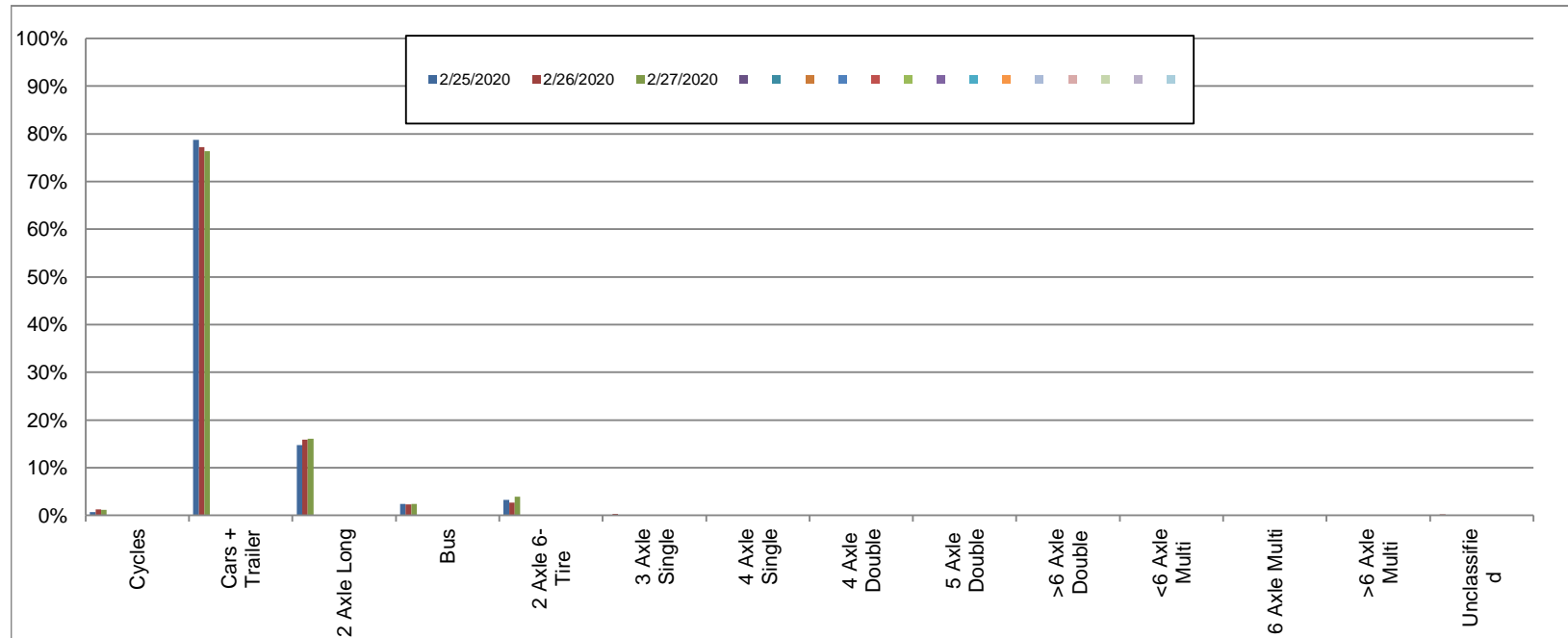
Southbound

February 25, 2020 to February 27, 2020

Daily Class Bin Percentages															Daily Class Bin Volumes											Total Volume				
Bin #	1	2	3	4	5	6	7	8	9	10	11	12	13	14	1	2	3	4	5	6	7	8	9	10	11		12	13	14	
Bin Class	Cycles	Cars + Trailer	2 Axle Long	Bus	2 Axle 6-Tire	3 Axle Single	4 Axle Single	4 Axle Double	5 Axle Double	>6 Axle Double	<6 Axle Multi	6 Axle Multi	>6 Axle Multi	Unclassified	Cycles	Cars + Trailer	2 Axle Long	Bus	2 Axle 6-Tire	3 Axle Single	4 Axle Single	4 Axle Double	5 Axle Double	>6 Axle Double	<6 Axle Multi	6 Axle Multi	>6 Axle Multi	Unclassified		
2/25/2020	0.7%	78.7%	14.7%	2.4%	3.3%	0.1%	0.0%	0.0%	0.0%	0.0%	0.0%	0.0%	0.0%	0.1%	12	1373	257	41	57	2	0	0	0	0	0	0	0	0	2	1744
2/26/2020	1.3%	77.2%	15.9%	2.3%	2.7%	0.3%	0.0%	0.1%	0.0%	0.1%	0.0%	0.0%	0.0%	0.2%	23	1401	288	42	49	5	0	1	0	2	0	0	0	4	1815	
2/27/2020	1.1%	76.4%	16.1%	2.4%	4.0%	0.0%	0.0%	0.1%	0.0%	0.0%	0.0%	0.0%	0.0%	0.0%	20	1373	289	43	71	0	0	1	0	0	0	0	0	0	1797	
Total	1.0%	77.4%	15.6%	2.4%	3.3%	0.1%	0.0%	0.0%	0.0%	0.0%	0.0%	0.0%	0.0%	0.1%	55	4147	834	126	177	7	0	2	0	2	0	0	0	6	5356	

Class Data Summary

Bin #	1	2	3	4	5	6	7	8	9	10	11	12	13	14	Total Volume
Bin Class	Cycles	Cars + Trailer	2 Axle Long	Bus	2 Axle 6-Tire	3 Axle Single	4 Axle Single	4 Axle Double	5 Axle Double	>6 Axle Double	<6 Axle Multi	6 Axle Multi	>6 Axle Multi	Unclassified	Total Volume
Survey Total	55	4147	834	126	177	7	0	2	0	2	0	0	0	6	5356
% Total	1.0%	77.4%	15.6%	2.4%	3.3%	0.1%	0.0%	0.0%	0.0%	0.0%	0.0%	0.0%	0.0%	0.1%	100%
Accumulated %	1.0%	78.5%	94.0%	96.4%	99.7%	99.8%	99.8%	99.9%	99.9%	99.9%	99.9%	99.9%	99.9%	100.0%	
Inv. Accum. %	99.0%	21.5%	6.0%	3.6%	0.3%	0.2%	0.2%	0.1%	0.1%	0.1%	0.1%	0.1%	0.1%	0.0%	



Classification Descriptions

Bin #	Bin Description
1	Motorcycles
2	Passenger cars, including those with recreational trailers
3	2-axle pick-ups, vans, and RVs, including those with recreational trailers
4	Buses
5	2-axle, 6-tire single units
6	3-axle single units
7	4-axle single units
8	3-axle or 4-axle double unit
9	5-axle double unit
10	6-, 7-, or 8-axle double unit
11	5-axle multiple unit
12	6-axle multiple unit
13	7-or-more-axle multiple unit
14	Vehicles that could not be classified

Site notes: